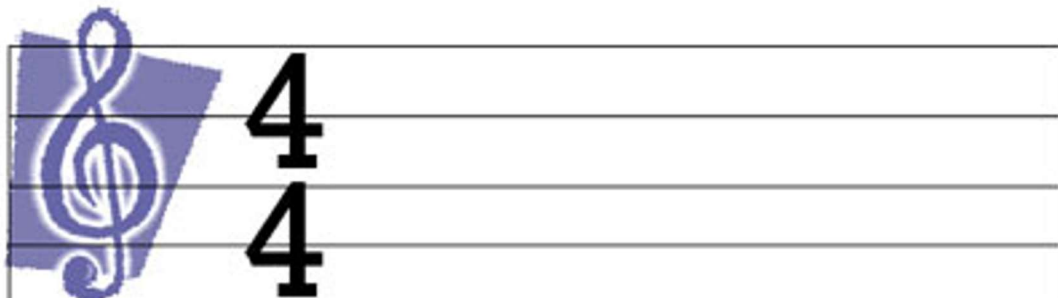
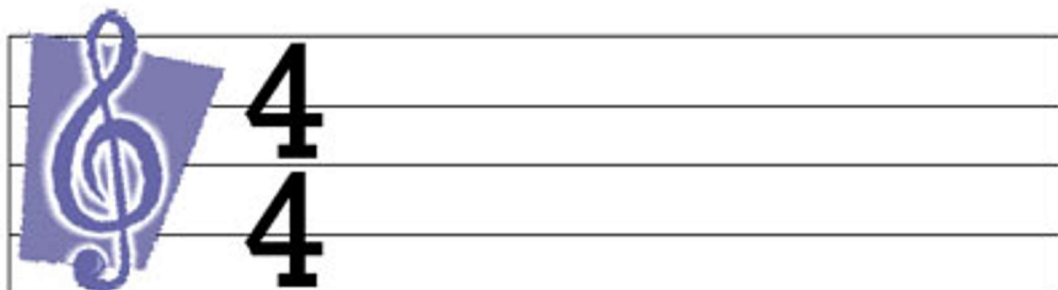


## GOD IS ALWAYS RIGHT

Let's Make a music note counting puzzle!



What kind of notes below can you put in each measure above to fit 4 counts into each measure?



**Half Note = 2 beats**



**Quarter Note = 1 beat**



**Whole Note = 4**

When working on a song, it is hard to think of notes that will fit and sound right. God has no problem with music. He makes it right 100% of the time..not 98% or 99% of the time.